



zeiser®-Pinbohrgerät P10

Item no.	Item
0017 6800	zeiser®-Pinbohrgerät P10 including: · metal drill, · plate holder, · impression mounting tray, · screw driver small, · hexa screw driver · power adapter · radio button
0017 6150	zeiser®-Plattenhalter



zeiser®-Einführungsset

Starter set for the zeiser® user
Including all materials and parts needed to make a zeiser® model.

Item no.	Item
0099 9250	zeiser®-Einführungsset including: 1 x zeiser®-Sockelplatte, white, round/small, 100 pieces 1 x Snap-On Basisplatte, round/small, 10 pieces 1 x Magnets M4 for Snap-On Platte, 10 pieces 1 x Combisil, 1 kg 1 x zeiser®-pin 14 round, 1,000 pieces 1 x zeiser®-pin 14 short, 1,000 pieces 1 x zeiser®-pins + sleeves, je 10 pieces 1 x magnets and knobs, je 10 pieces 1 x alignment plate, clear, small/round 1 x metal sleeve 3 x impression tray carrier 1 x M8 magnetic plates, 50 pieces 1 x allen key 3.0 short for magnetic plates 1 x hammer 1 x zeiser®-pin drill machine P10 1 x place holder foils, 100 pieces 1 x cutter 1 x holder for rollergrinding belt 1 x grinding belt K80, 50 pieces



zeiser®-Sockelplatte, rund

Original zeiser® base plates round for the zeiser model system

Item no.	Item	Colour	Contents
0057 6825	zeiser®-Sockelplatte, round/small	white	100 pieces
0057 6856	zeiser®-Sockelplatte, round/small	terracotta	100 pieces
0057 6842	zeiser®-Sockelplatte, round/small	blue	100 pieces
0057 6844	zeiser®-Sockelplatte, round/small	grey	100 pieces
0057 6889	zeiser®-Sockelplatte, round/small, with metal disk	white	100 pieces
0057 6890	zeiser®-Sockelplatte, round/small, with metal disk	terracotta	100 pieces
0057 6843	zeiser®-Sockelplatte, round/small, with metal disk	blue	100 pieces
0057 6894	zeiser®-Sockelplatte, round/small, with metal disk	grey	100 pieces
0057 6854	zeiser®-Sockelplatte, round/large	white	100 pieces
0057 6855	zeiser®-Sockelplatte, round/large, with metal disk	white	100 pieces



zeiser®-Sockelplatte, klassisch

Original zeiser® base plates for the zeiser model system.
Additional colours for zeiser® base plates on request.

Colour	Item no. zeiser®-Sockelplatte, small	Item no. zeiser®-Sockelplatte, large	Contents
white	0057 6830	0057 6840	100 pieces
blue	0057 6836	0057 6846	100 pieces
terracotta	0057 6820	0057 6828	100 pieces
grey	0057 6838	0057 6848	100 pieces
black	0057 6835	_____	100 pieces
yellow	0057 6832	_____	100 pieces
green	0057 6834	_____	100 pieces

Colour	Item no. zeiser®-Sockelplatte, small, with metal disc	Item no. zeiser®-Sockelplatte, large, with metal disc	Contents
white	0057 6831	0057 6841	100 pieces
blue	0057 6837	0057 6847	100 pieces
terracotta	0057 6821	0057 6829	100 pieces
grey	0057 6839	0057 6849	100 pieces
black	0057 6893	_____	100 pieces
yellow	0057 6891	_____	100 pieces
green	0057 6892	_____	100 pieces

zeiser®-Snap-On Platte, rund

For the perfect split cast

Perfectly aligned system, high precision, superior fitting, reusable, with exchangeable magnet.

Item no.	Item	Contents
0057 6826	zeiser®-Snap-On Platte, round/small	10 pieces
0057 6851	zeiser®-Snap-On Platte, round/small	50 pieces
0057 6903	special pack I zeiser®-Snap-On Platte, round/small	10 zeiser®-Snap-On Platten, round/small incl. 10 magnets M4
0057 6904	special pack II zeiser®-Snap-On Platte, round/small	50 zeiser®-Snap-On Platten, round/small incl. 50 magnets M4
0057 6817	zeiser®-Snap-On Platte, round/large	10 pieces
0057 6852	zeiser®-Snap-On Platte, round/large	50 pieces
0057 6901	special pack I zeiser®-Snap-On Platte, round/large	10 zeiser®-Snap-On Platten, round/large incl. 10 magnets M4
0057 6902	special pack II zeiser®-Snap-On Platte, round/large	50 zeiser®-Snap-On Platten, round/large incl. 50 magnets M4
0057 6758	zeiser® Rundmagnete M4	10 magnets M4, round



zeiser®-Snap-On Platte, klassisch

For the perfect split cast

Perfectly aligned system, high precision, superior fitting, reusable, with exchangeable magnet.

Item no.	Item	Contents
0057 6810	zeiser®-Snap-On Platte, small	10 pieces
0057 6850	zeiser®-Snap-On Platte, small	50 pieces
0057 6896	special pack I zeiser®-Snap-On Platte, small	10 zeiser®-Snap-On Platten, small incl. 10 magnets M4
0057 6897	special pack II zeiser®-Snap-On Platte, small	50 zeiser®-Snap-On Platten, small incl. 50 magnets M4
0057 6815	zeiser®-Snap-On Platte, large	10 pieces
0057 6860	zeiser®-Snap-On Platte, large	50 pieces
0057 6898	special pack I zeiser®-Snap-On Platte, large	10 zeiser®-Snap-On Platten, large incl. 10 magnets M4
0057 6899	special pack II zeiser®-Snap-On Platte, large	50 zeiser®-Snap-On Platten, large incl. 50 magnets M4

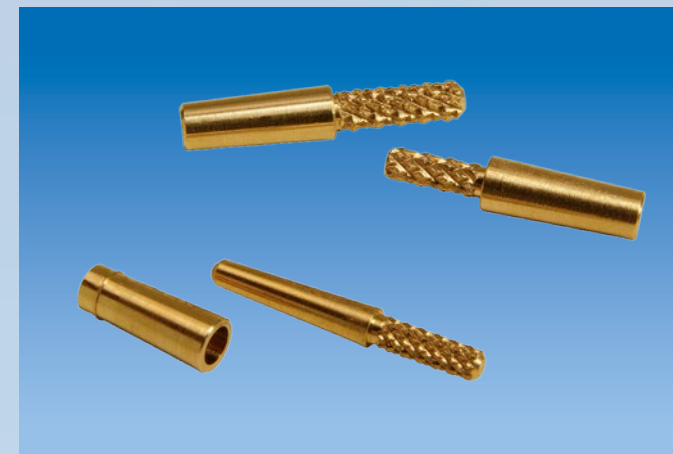


zeiser®-Combisil

Reusable silicon-putty

Does not stick to plaster, also suitable for blocking out of compound material.

Item no.	Item	Contents
0057 6080	zeiser®-Combisil	1 kg
0057 6081	zeiser®-Combisil	5 kg



zeiser®-Pins

Original pins for the zeiser® model system

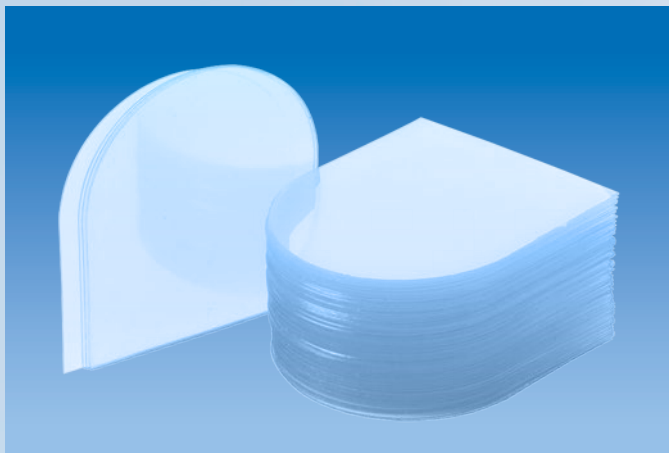
Item no.	Item	Contents
0057 6050	zeiser®-Pin 14, round	1,000 pieces
0057 6051	zeiser®-Pin 14, round	10,000 pieces
0057 6052	zeiser®-Pin 14, short short thin stump	1,000 pieces
0057 6910	zeiser®-Pins und Hülsen (for small stumps)	1,000 pins 1,000 sleeves
0017 6010	zeiser®-Pin-Bohrer	1 piece
0057 6480	zeiser®-Keramikpin	25 pieces



zeiser®-M8 Magnethalteplatten

Reusable, valve for money

Item no.	Item	Contents
0057 6640	zeiser®-M8 Magnethalteplatten	50 pieces
0057 6695	zeiser®-Innensechskant 3,0 kurz für Magnethalteplatten	1 piece



zeiser®-Platzhalterfolie

Place holder foil for articulation work

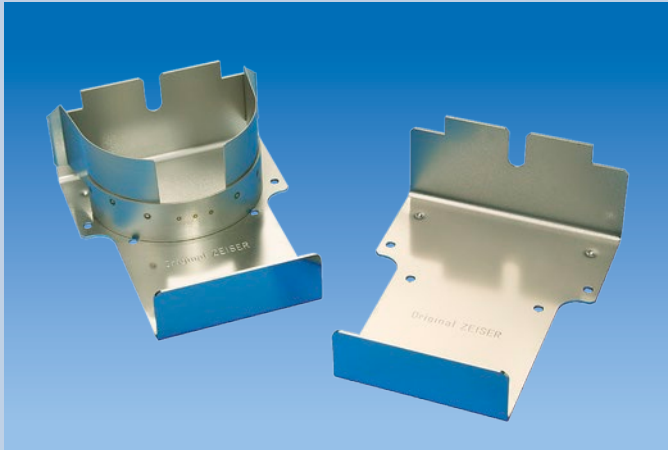
Item no.	Item	Contents
0057 6805	zeiser®-Platzhalterfolie	100 pieces



zeiser®-Schleifband/-träger

Sanding mandrel and cups working on dental arch models

Item no.	Item	Contents
0081 5600	zeiser®-Träger für Kappe 7 x 13 mm	1 piece
0081 5400	zeiser®-Träger für Kappe 13 x 19 mm	1 piece
0081 5300	zeiser®-Träger für Schleifband 12 x 13 mm	1 piece
0081 6080	zeiser®-Schleifkappe Korn 80 für Träger 7 x 13 mm	50 pieces
0081 6150	zeiser®-Schleifkappe Korn 150 für Träger 7 x 13 mm	50 pieces
0081 6320	zeiser®-Schleifkappe Korn 320 für Träger 7 x 13 mm	50 pieces
0081 5080	zeiser®-Schleifkappe Korn 80 für Träger 13 x 19 mm	50 pieces
0081 5150	zeiser®-Schleifkappe Korn 150 für Träger 13 x 19 mm	50 pieces
0081 5320	zeiser®-Schleifkappe Korn 320 für Träger 13 x 19 mm	50 pieces
0081 5310	zeiser®-Schleifband Korn 80 für Träger 12 x 13 mm	50 pieces
0081 5330	zeiser®-Schleifband Korn 120 für Träger 12 x 13 mm	50 pieces
0081 5340	zeiser®-Schleifband Korn 240 für Träger 12 x 13 mm	50 pieces



zeiser®-Abdruckträger

To fixate impressions with Combisil

Item no.	Item	Contents
0017 6033	zeiser®-Abdruckträger	1 piece
0017 6042	zeiser®-Abdruckträger, 65 mm	1 piece
0057 6360	zeiser®-Metall-Manschette	1 piece



zeiser®-Segmentkuvette

For segment doubling

Item no.	Item	Contents
0057 6610	zeiser®-Segmentkuvette Größe 1	1 piece
0057 6612	zeiser®-Segmentkuvette Größe 2	1 piece
0057 6613	zeiser®-Segmentkuvette Größe 3	1 piece
0057 6614	zeiser®-Vollkuvette für Sockelplatten, large	1 piece
0057 6615	zeiser®-Vollkuvette für Sockelplatten, small	1 piece